

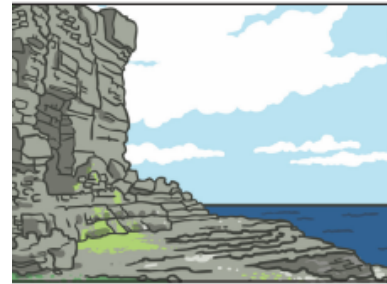
## Seaside Knowledge Organiser Y2 – Summer 1

*What are the similarities and differences between the key physical and human features of our local environment compared with a seaside location?*



### Physical Features of the Seaside

A seaside resort has many **physical features**. **Features** such as the beach, the sea, cliffs and caves have been made naturally. This means they were made by nature.



### Human Features of the Seaside

**Human features** found at the seaside might include the **pier**, the **promenade**, a lighthouse and a fairground. These **features** are all man-made.

- Beach, sea and cliffs are physical features of the seaside.
- Pier, promenade and harbour are human features of the seaside.
- Hill, river and fields are physical features of Cheltenham.
- Racecourse, town hall and Pittville Pump Rooms are human features of Cheltenham.
- Weston-Super-Mare is a town in Somerset, England.
- Cheltenham is a town in Gloucestershire, England.
- The four main points of the compass are north, south, east and west.

### VOCABULARY

<i>physical feature</i>	<i>A feature that has been formed by nature</i>
<i>human feature</i>	<i>A feature that has been made or changed by humans</i>
<i>pier</i>	<i>A structure built out into the water for people to walk on</i>
<i>coast</i>	<i>The area where sea and land meet</i>
<i>compass directions</i>	<i>Four main points of the compass</i>
<i>aerial photographs</i>	<i>A photograph taken from above</i>
<i>map</i>	<i>A drawing of a particular area showing what it would look like from above.</i>
<i>key</i>	<i>Used to explain the symbols shown on a map</i>